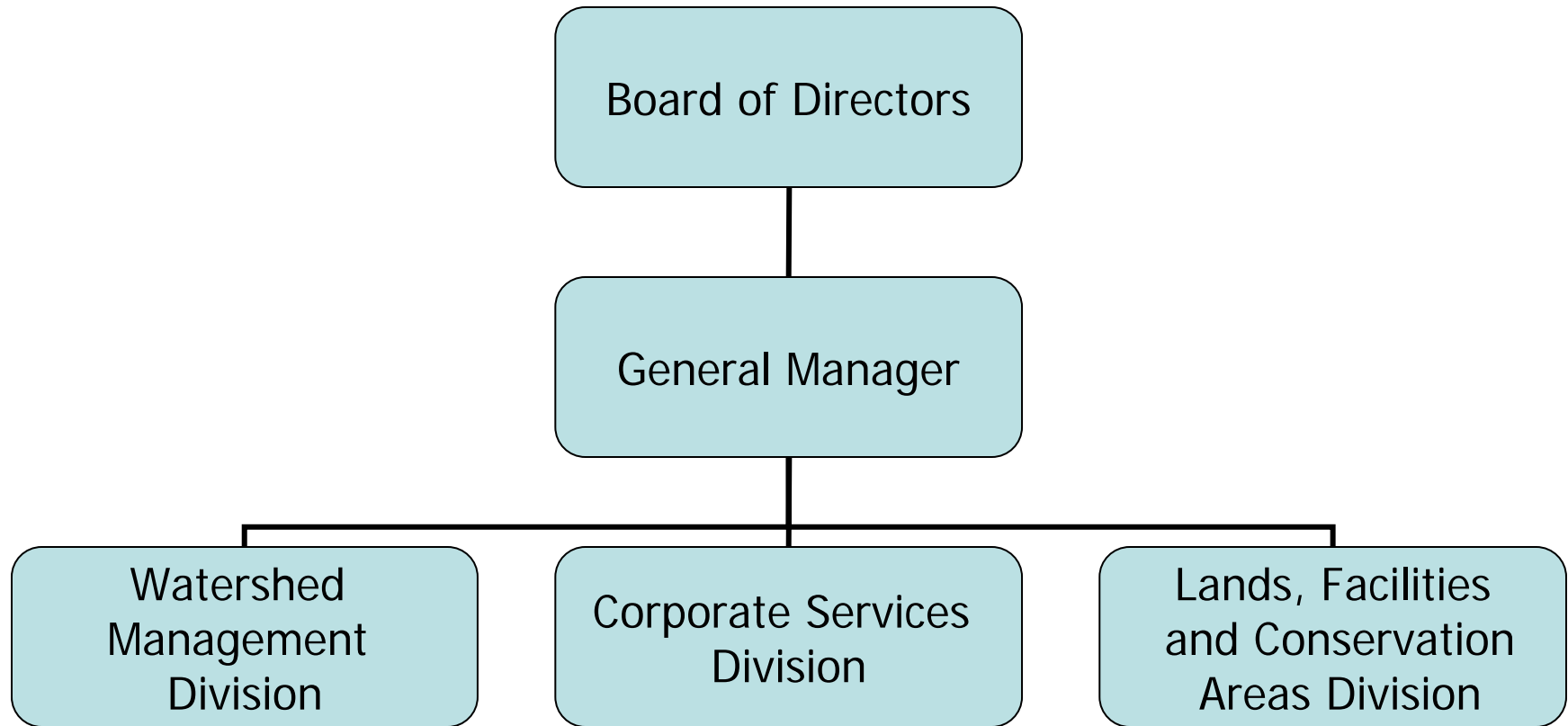




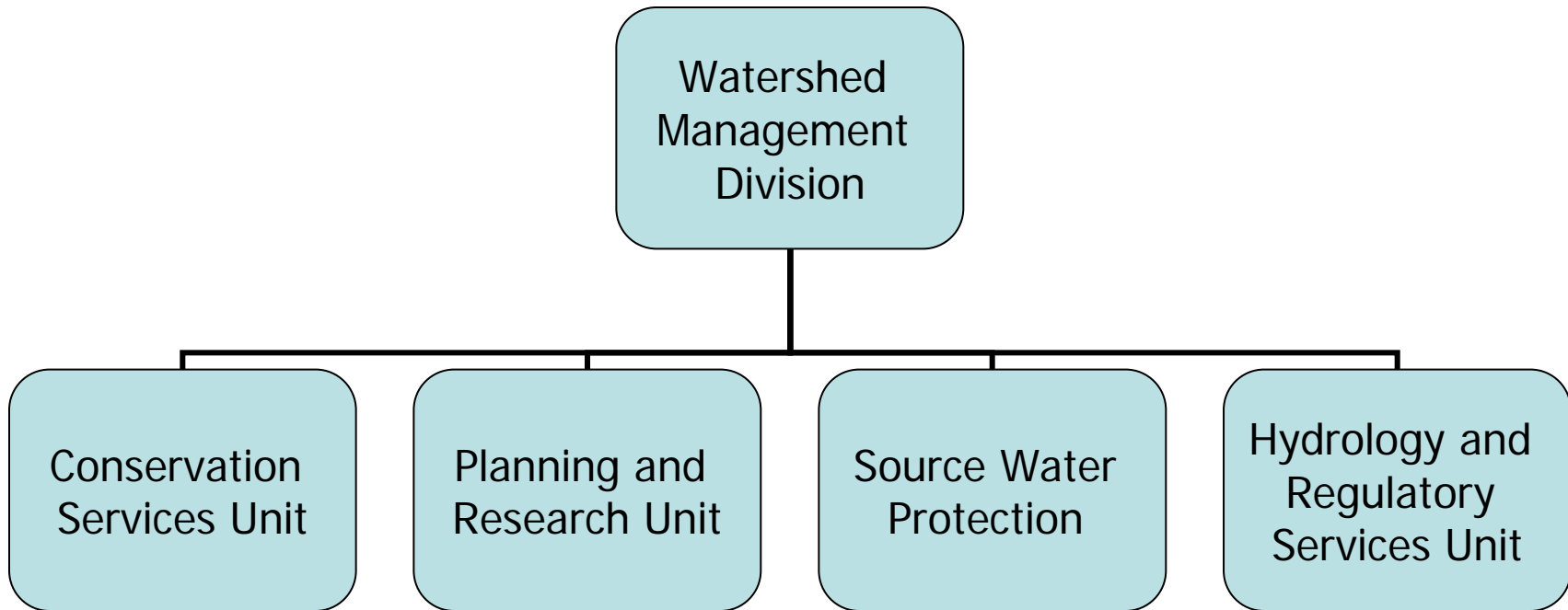
Environmental Planning Services



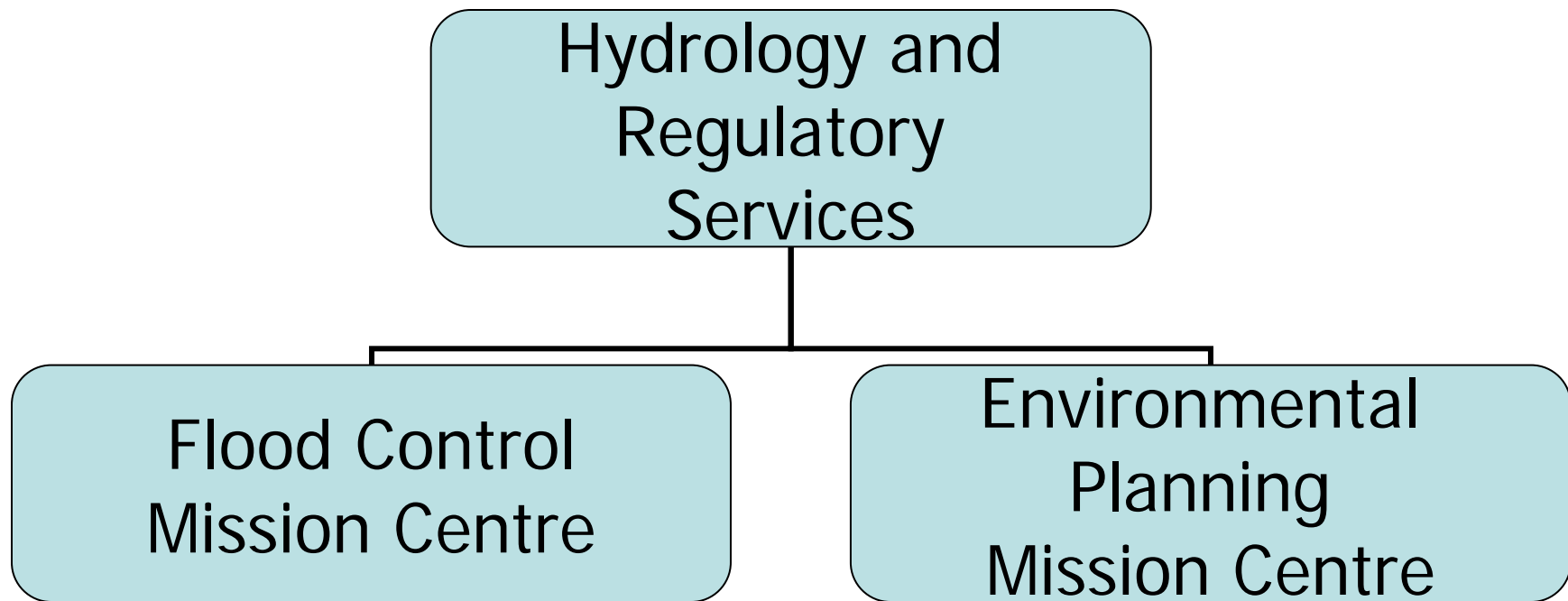
UTRCA Corporate Structure



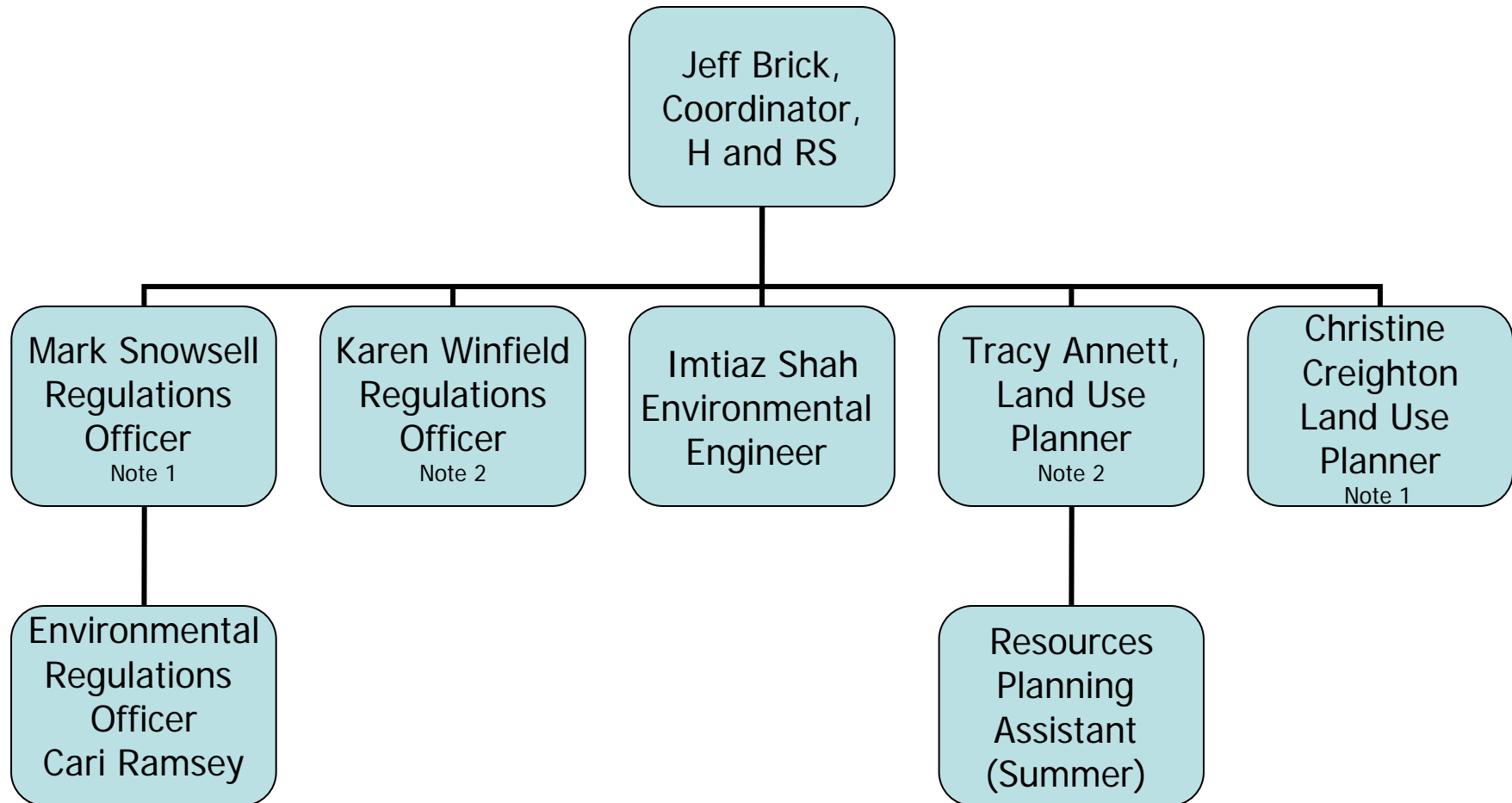
Watershed Management Division



Hydrology and Regulatory Services



Environmental Planning



Note 1: Responsible for City of London activities and assists with coverage for balance of watershed

Note 2: Responsible for balance of watershed activities and provides coverage for London

Environmental Planning Services

- 1. Regulatory Services
 - Planning Act – Plan input and plan review services
 - Conservation Authorities Act – Section 28, Natural Hazards Regulation (formerly Fill, Construction and Alteration to Waterways Regulation)
 - Other Legislation:
 - Fisheries Act
 - Aggregates Act
 - Drainage Act
 - Environmental Assessment Act
- 2. Mapping and Inquiries
 - Legal Inquiries
 - General Inquiries

1. a) Planning Act

- Working with municipalities to:
 - Manage the risk related to natural hazards
 - Identify and protect natural heritage and natural resources
 - Mitigate development related impacts such as stormwater management and sediment and erosion control
- Provide municipalities with access to technical advice and planning advice to assist them in fulfilling their responsibilities under the Planning Act

Specific CA Role in Land Use Planning

- Assist the municipality with interpretation of policies, technical and scientific information
- Assist with “shall be consistent with” requirement of the Planning Act
- Focus on our specific areas of expertise:
 - Natural hazards
 - Natural heritage
 - Natural resources (moving into groundwater)
 - Servicing as it affects the above
- Rely heavily on scientific defensibility/justification

CA Planning Services

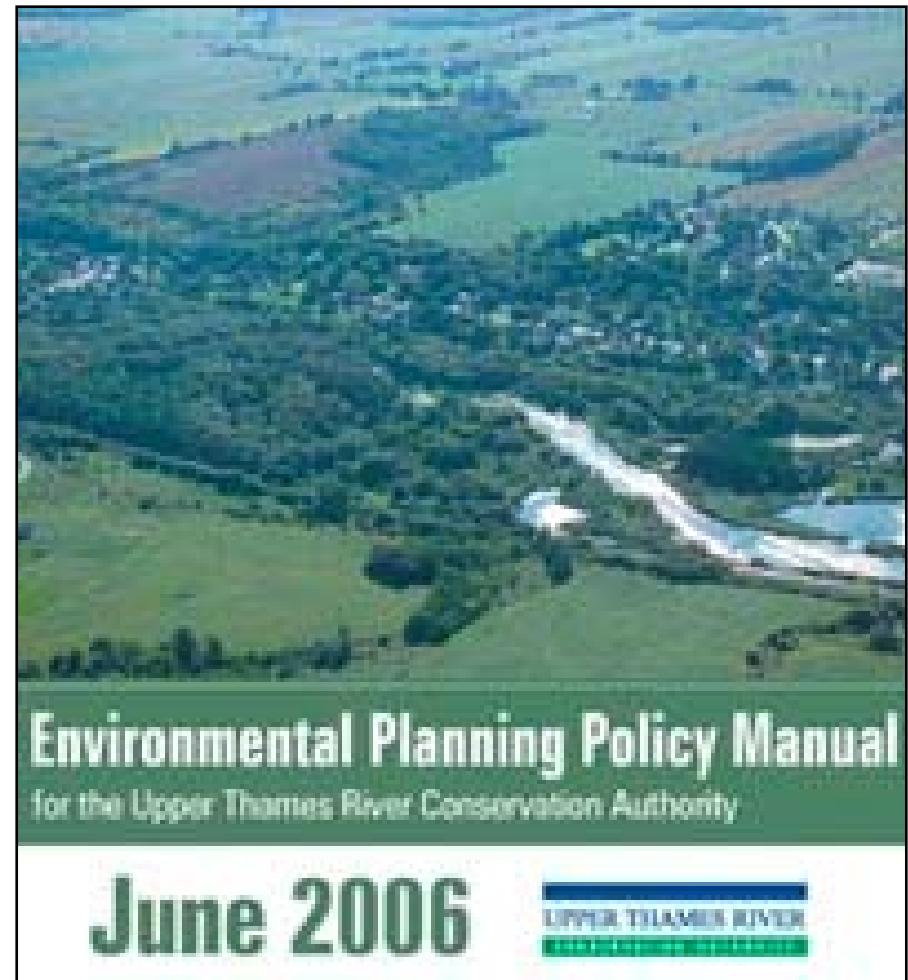
- Provide both application review and peer review functions
- Application Review
 - Application Review identifies issues, identifies need for more info, technical reports, policy compliance etc.
 - Disclosure of `vulnerable areas` information related to Drinking Water Source Protection
- Technical Review
 - Technical reports prepared by the proponent
 - Peer Review of technical reports is necessary to deal with possible conflicts

Upper Thames River CA

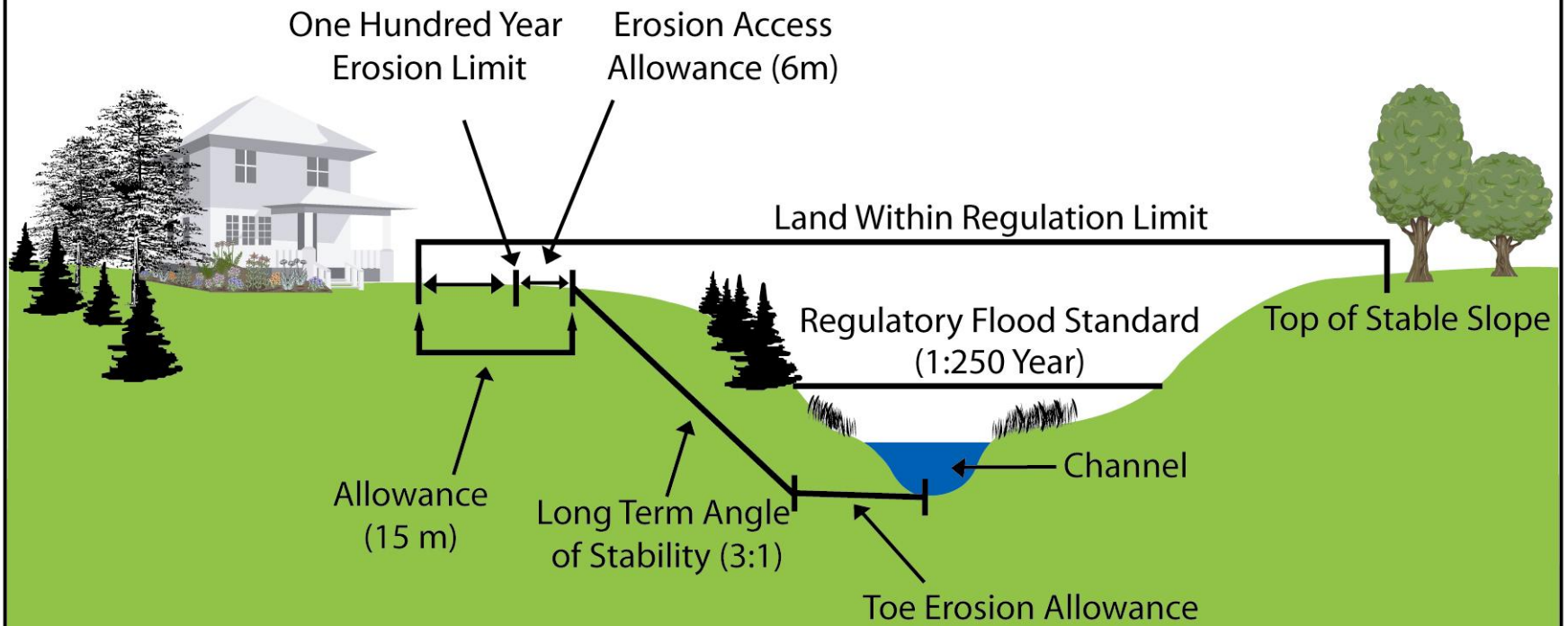
- Technical expertise to support planning:
 - Planners
 - GIS specialists
 - Hydrologists
 - Stormwater management
 - Hydrogeologist
 - Foresters
 - Ecologists/Biologists
 - River morphology
 - Fisheries
 - Species at Risk

Areas of Interest

- Natural Hazards
 - Flood plains
 - Hazardous steep slope areas
 - Meander belts – river morphology
 - Wetlands – for their flood attenuation value

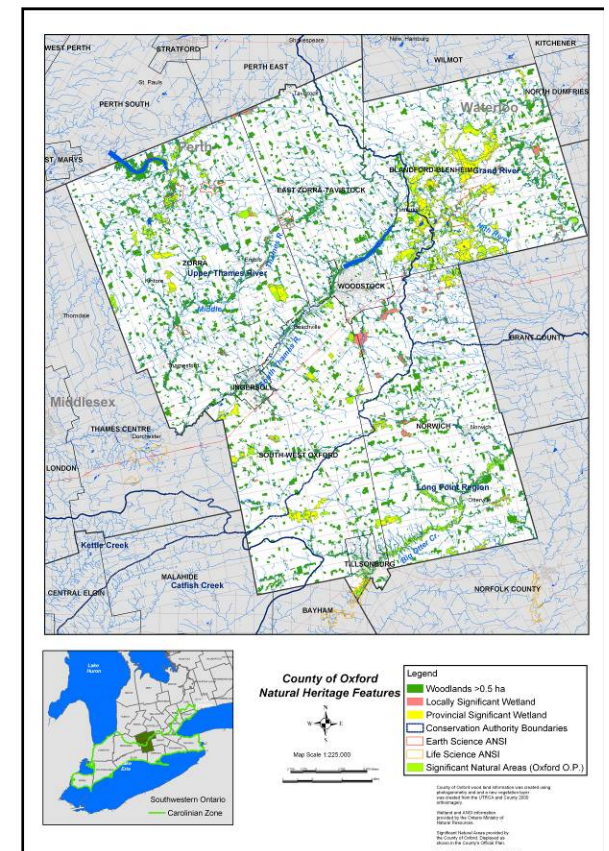


Erosion Hazard Limit - Apparent Riverine Systems



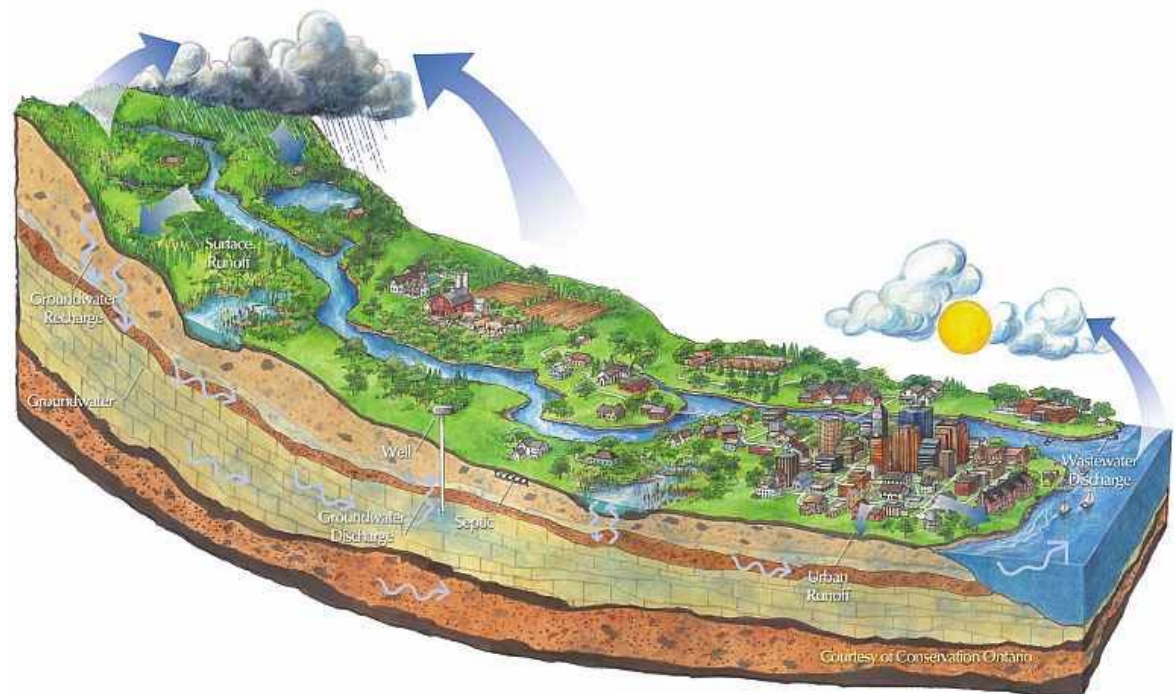
Areas of Interest

- Natural heritage:
 - Wetlands – for their biological values
 - Woodlands
 - Fish habitat
 - Wildlife habitat
 - Natural corridors
 - Threatened and endangered species habitat



Areas of Interest

- Natural Resources
 - Groundwater resources



Areas of Interest

- Servicing mitigation
 - Stormwater management
 - Quantity
 - Quality
 - In-stream erosion
 - Sediment and erosion control



Upper Thames River CA

- Technical expertise to support planning:
 - Planners
 - GIS specialists
 - Hydrologists
 - Stormwater management
 - Hydrogeologist
 - Foresters
 - Ecologists/Biologists
 - River morphology
 - Fisheries
 - Species at Risk



1. b) Regulation - Section 28 of the Conservation Authorities Act

- Permit required for construction or placing fill in area subject to flooding or erosion
- Permit required for straightening, diverting, or altering the channel of a watercourse
- Limited to `hazardous lands` as defined in the Act or Regulation

Why Regulate?

- Meant to be a hazard management tool
- Protect people and property from natural hazard processes
- Want to maintain functions such as:
 - Flood conveyance
 - Flood plain storage
 - Natural erosion processes
- Can achieve natural heritage objectives such as protection of fish habitat

CA Act Permit Examples



1. c) Fisheries Act

- CA's have agreements in place with DFO:
 - Level I – Screening
 - Level II – Mitigation Planning
 - Level III – Compensation
- UTRCA has a Level II agreement
- Agreement is meant to streamline activities for municipalities and landowners
- Simple message - When doing work in or around water, contact your local CA
- CA can do “triage” on the specific project and trigger DFO involvement when necessary

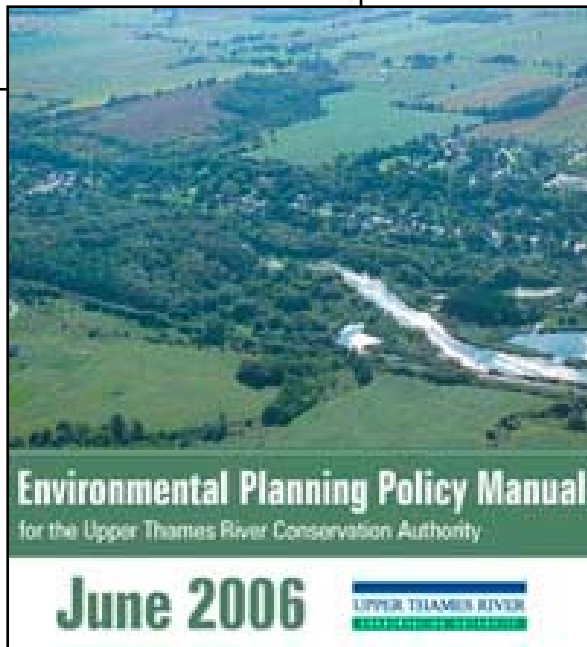
2. Mapping and Inquiry Services

- Inquiries from:
 - Legal Inquiries
 - Real Estate
 - Consultants
 - Municipalities
 - General Public

2005



Provincial
Policy
Statement



UTRCA Policies for Regulatory Activities are available on-line at www.thamesriver.on.ca

The screenshot shows the UTRCA website interface. At the top is a navigation menu with links: Home, About Us, News, Events, Weather, Downloads, Links, Employment, Search, Site Map. Below this is a secondary menu: Water Management, Recreation & Conservation Lands, Landowner Programs, Stream & Forest Health, Education & Partnerships, Planning, Permits & Maps. The main content area features a news article titled "Lifetime Achievement Award for Bog Defender" with a photo of Dr. W.W. Judd and a "READ MORE >>" link. To the right is a sidebar with a "When do you need a Permit?" section containing links for "Fees for Maps & Permits", "Planning Advisory Services", "UTRCA Environmental Policy Manual", "New Generic Regulation", "Application for Consent/UTRCA Permit Application Form", "London Thames Valley Corridor Plan", "Source Water Protection", and "UTRCA Watershed Map". The footer of the browser window shows the URL: http://www.thamesriver.on.ca/Planning_Permits_and_Maps/Planning_&_permits.htm.

More Information

- Chapters 1 – 5 of the UTRCA Environmental Planning Policy Manual
- Also may be interested in the Glossary, Interpretation and the Appendices
- Available on-line at:

http://www.thamesriver.on.ca/Planning_Permits_and_Maps/env_planning_policy_manual.htm

Environmental Planning

The Good News

- UTRCA Policy Manual (2006)
- Updated CA Act Regulation (2006)
- Heightened awareness of natural hazard, natural heritage, drinking water and servicing issues
- Studies providing the science:
 - Natural Heritage Studies (ie. ONHS)
 - SWP Assessment Reports

Environmental Planning

The Challenges

- Need to update the Environmental Planning Policy Manual – Five Years Old!
- Revisions to the UTRCA Regulation (O. Reg 157.06)
- Trend toward increased complexity of planning and permit activities impacting our service
- Ebb and flow of workload can cause some turn around time delays – have set the bar high
- More involvement of public in development process (expectations and demand for information)
- Compliance with Conservation Authorities Liaison Committee (CALC) Best Practices Guide
 - Fee policies, reporting time lines
- UTRCA Fee Schedule

Questions / Discussion