

Project Overview Presentation
Oxford Natural Heritage Study
Steering Committee Meeting
March 4, 2005

Project Overview

Financial Partners

- County of Oxford (\$20,000)
- Ducks Unlimited Canada (\$10,000)
- Stewardship Oxford (\$5,000)
- Ontario Trillium Foundation (\$50,000)
- Conservation Authorities (in-kind services)
- Ministry of Natural Resources (in-kind services)

ONHS Partners

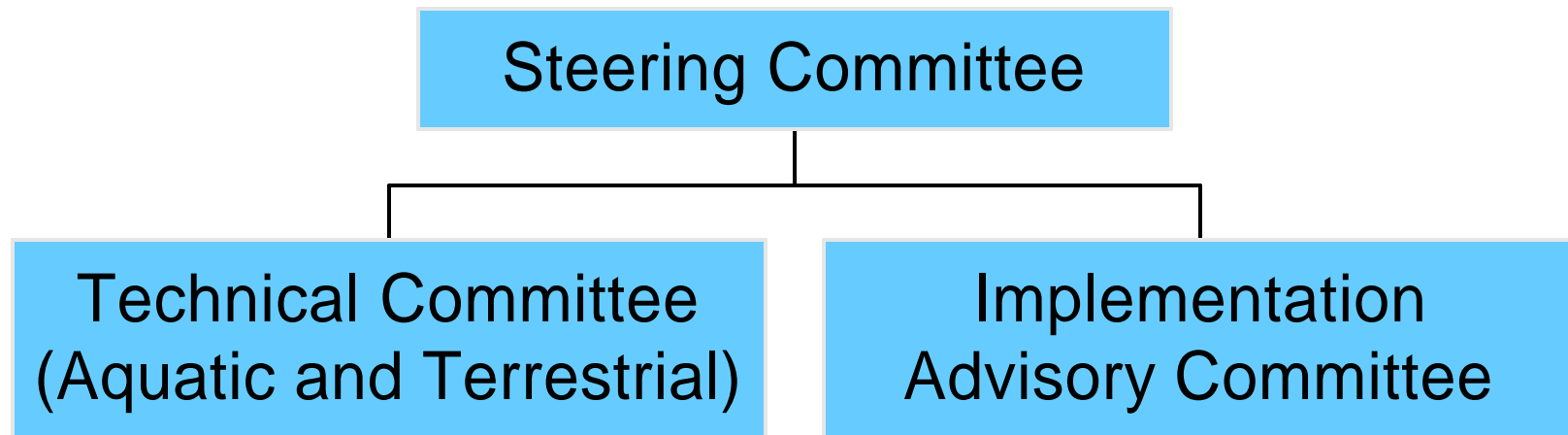
- County Conservation Authorities:
 - Catfish Creek Conservation Authority 2
 - Grand River Conservation Authority 21
 - Long Point Region Conservation Authority 22
 - Upper Thames River Conservation Authority 55
- Oxford County Federation of Agriculture
- Other stakeholder groups

ONHS Purpose

A project to assess the natural heritage resources (aquatic and terrestrial) of Oxford County and to identify measures to protect and enhance these resources for the future

Project Management Model

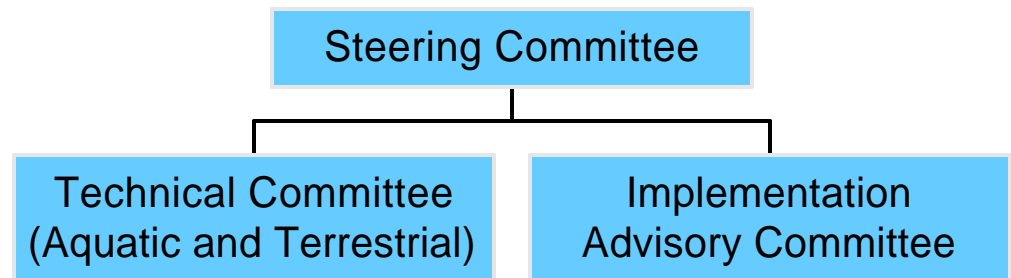
Oxford Natural Heritage Study



Project Management Model

Steering Committee

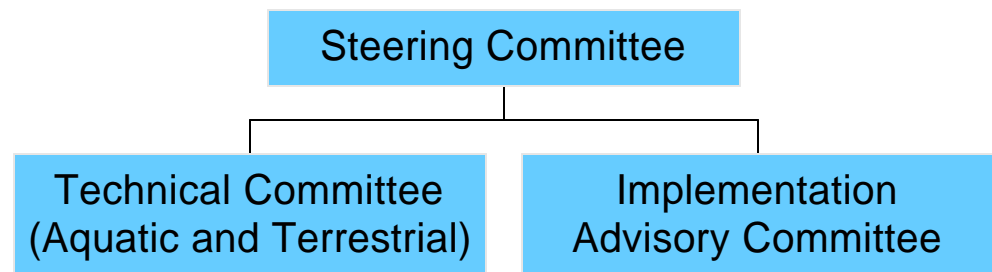
- Overall project guidance and approval
- Receive input from the Technical Committee and the Implementation Advisory Committee
- Participants:
 - County of Oxford
 - Ducks Unlimited Canada
 - Conservation Authorities
 - Stewardship Oxford
 - Oxford County Federation of Agriculture



Project Management Model

Technical Committee

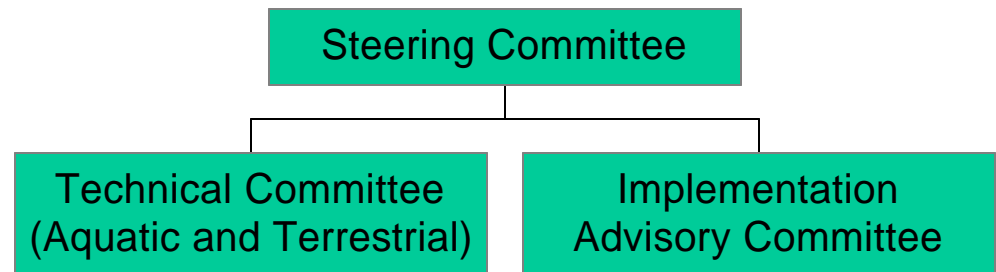
- Oversee the science components
- Recommendations to the Steering Committee
- Participants:
 - Technical staff from the CA's
 - DU technical staff
 - MNR
 - Academic



Project Management Model

Implementation Advisory Committee

- Cross section of stakeholders
- Consider implementation options:
 - Acquisition
 - Regulation
 - Stewardship and Incentives
 - Education
 - Other options????



Implementation Tools

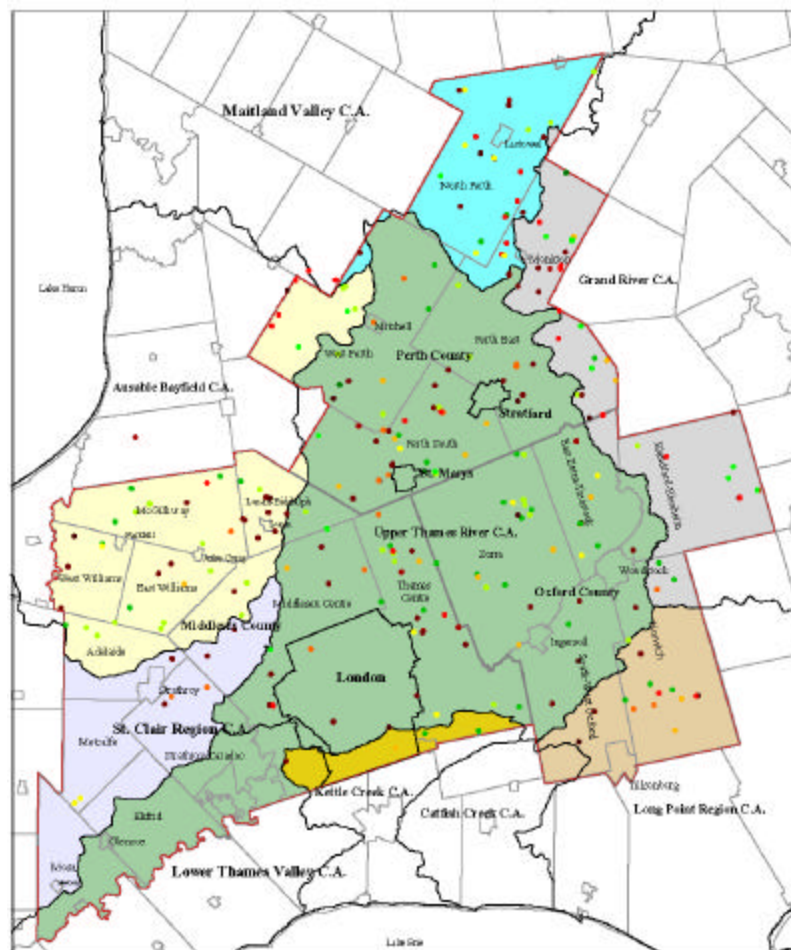
Education

- Examples
 - Posters
 - BMP manuals
 - Fact sheets
 - “what you can do in your community” tips

Implementation Tools

Stewardship and Incentives

- Clean Water Project
 - Funding from municipalities. Matched by landowner
 - Support water quality measures on private land
 - Manure storages, tree planting, watercourse buffers



Implementation Tools

Stewardship and Incentives

- Other Examples
 - Tree marking
 - Tree planting
 - Alternative habitat creation – prairies
 - BMP books – targeted at agriculture – buffer BMP's etc.

Implementation Tools

Regulatory Tools

- Examples
 - Land use planning policies
 - Woodland protection by-law

Project Management Model

Implementation Advisory

Committee participants:

- Project partners (County, CA's, DU, Oxford Stewardship)
- Agricultural community
- Field Naturalists
- Anglers and Hunters
- Woodlot Association
- Carolinian Canada

Project Management Model

Project Coordination, Staffing & Communications

- Project coordination through UTRCA
- Technical work completed by UTRCA staff with involvement of other organizations
- Communications plan
- Project promotion
- Web site for information

Aquatic Methodology

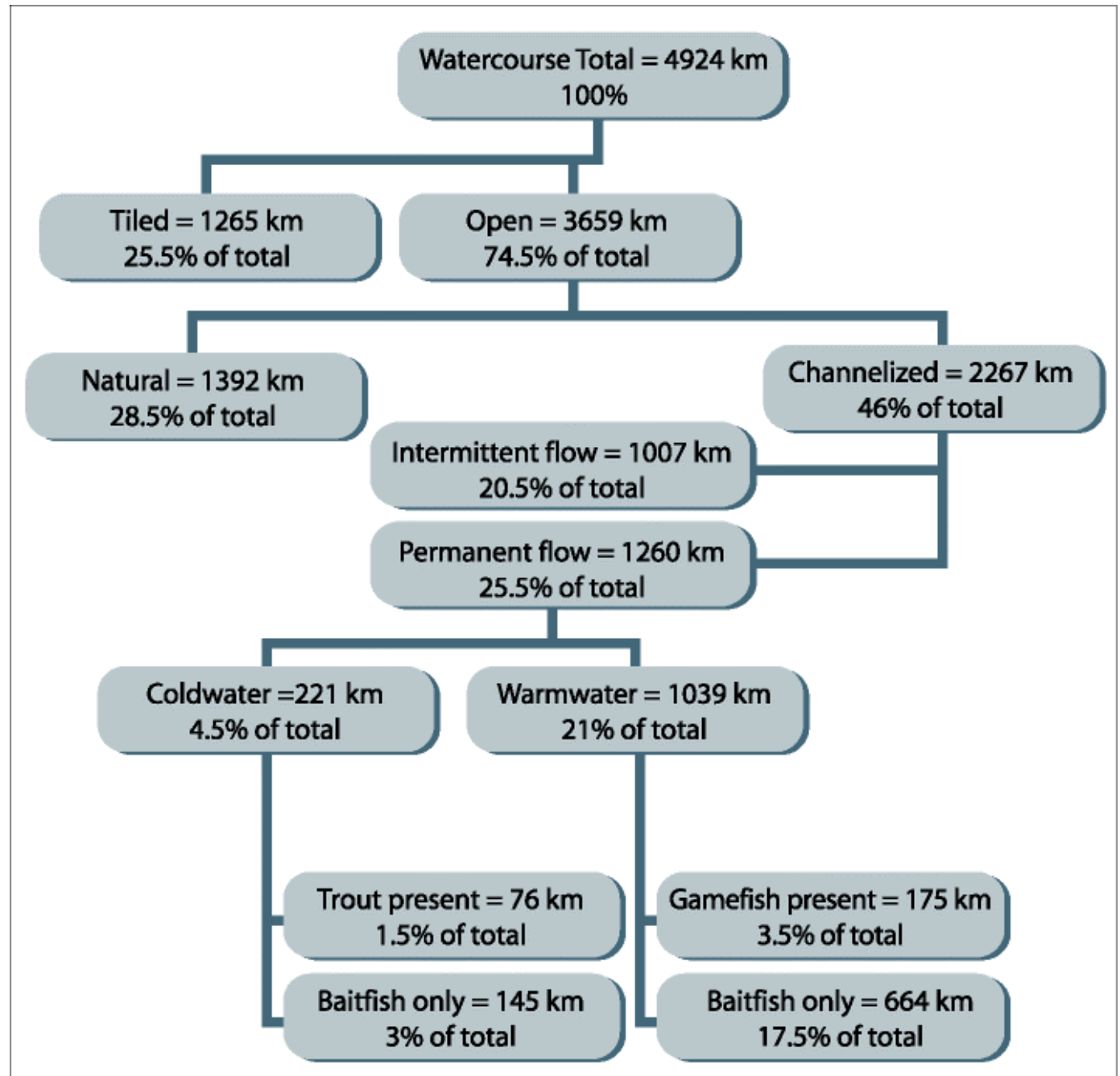
Overview

- Existing data indicates some water quality problems, however, the County still has very productive and diverse aquatic communities
- Presence of a few “Species at Risk” (fish and freshwater mussels)

Aquatic Methodology

- Focus on characterizing existing conditions
 - Formulate on a County basis
 - Serve as a baseline for future monitoring
- Main products:
 - Aquatic resource mapping
 - Water quality / stream health monitoring network designed to cover the County

Watercourse information for Upper Thames watershed



Terrestrial Methodology Overview

Terrestrial system includes:

- Woodlands
- Wetlands
- Prairie habitat
- Riparian zones

* Current estimate of forest cover is 13.5 %

Terrestrial Methodology

Field Work Component

- Aerial surveys to confirm patch boundaries
- Utilize data from past studies
- Targeted field surveys of lands of specific interest

Desk Top Component

- Mapping and characterization of the terrestrial components
- Develop significance criteria

Project Timing

- First Steering Committee meeting/Project Launch – March 2005
- Aquatic and Terrestrial Work – 2005
- Implementation Committee work – May 2005 to April 2006
- Final report – August 2006

Summary

- The ONHS will provide:
 - Baseline information on the state of the natural heritage resource in Oxford County
 - A natural heritage system map which can guide future restoration efforts
 - A comprehensive discussion on implementation options for protecting and enhancing natural heritage resources in Oxford County