

Pets in the Park

Pets are welcome at Fanshawe Conservation Area. Owners must keep their pets under control and on leash (maximum 2 metres) at all times. Please stoop and scoop after your pet to keep our conservation area clean and enjoyable.

Permitting your pet to disturb other people, be at large or make excessive noise may result in a fine.

The Hiker's Code

- Trails open dawn to dusk
- Travel only on marked trails and respect trail closures
- Do not disturb wildlife or pick or transplant flowers
- Do not climb fences
- Keep dogs on leash and under control at all times, and always stoop and scoop
- Keep the trail free of litter



Admission/Trail Fees

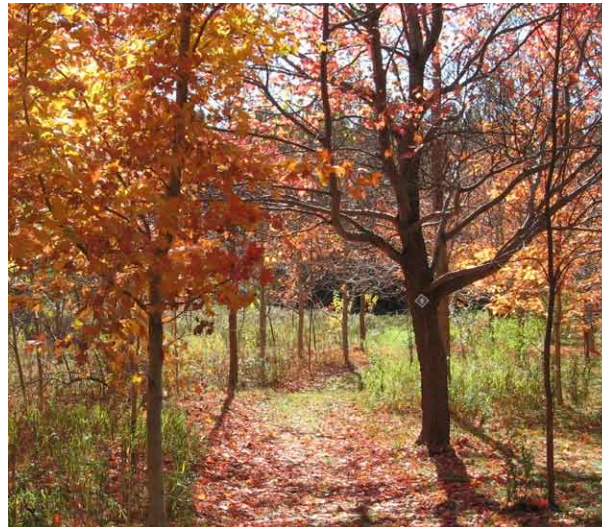
The following fees are in effect from April 25 - October 19, 2008. GST and PST included where applicable. All fees and dates subject to change without notice.

	Daily	Season
Motor Vehicles	\$5.00 adult	\$70.00 (Vehicle Pass Sticker)
	\$2.50 child (12 & under) Maximum \$10.00/ vehicle	
Pedestrians	\$5.00 adult	\$45.00 adult
	\$2.50 child (12 & under)	\$10.00 child
Cyclists	\$5.00 adult	\$45.00
	\$2.50 child (12 & under)	

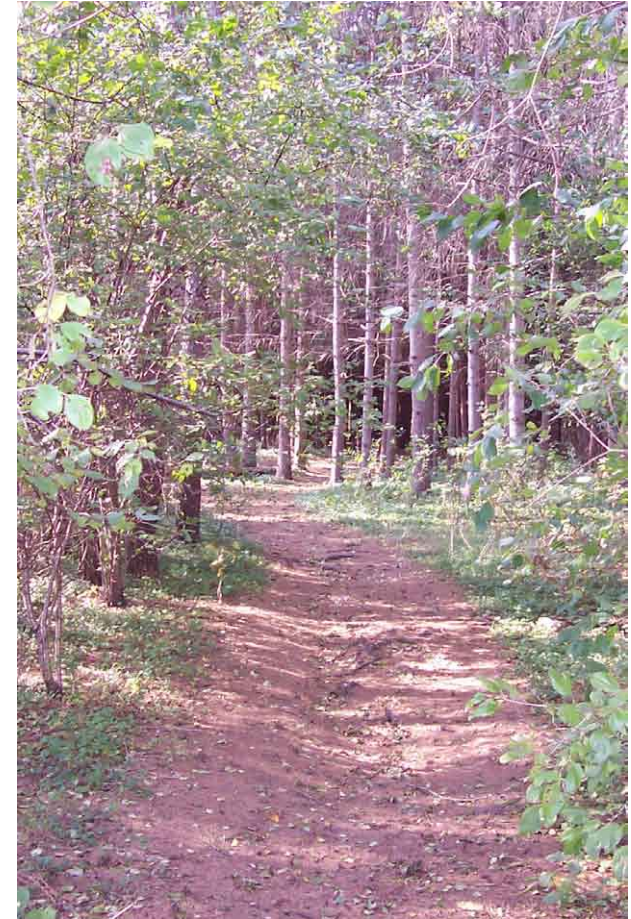
Hiking Trails

The four short hiking trails within Fanshawe Conservation Area total 10.5 km in length. The trails are designated as colours (yellow, blue, green or red) and signed with square markers corresponding with the colour of the trail.

The 20 km Fanshawe Lake Trail may be used for hiking or biking. A separate brochure and map are available for the Lake Trail.

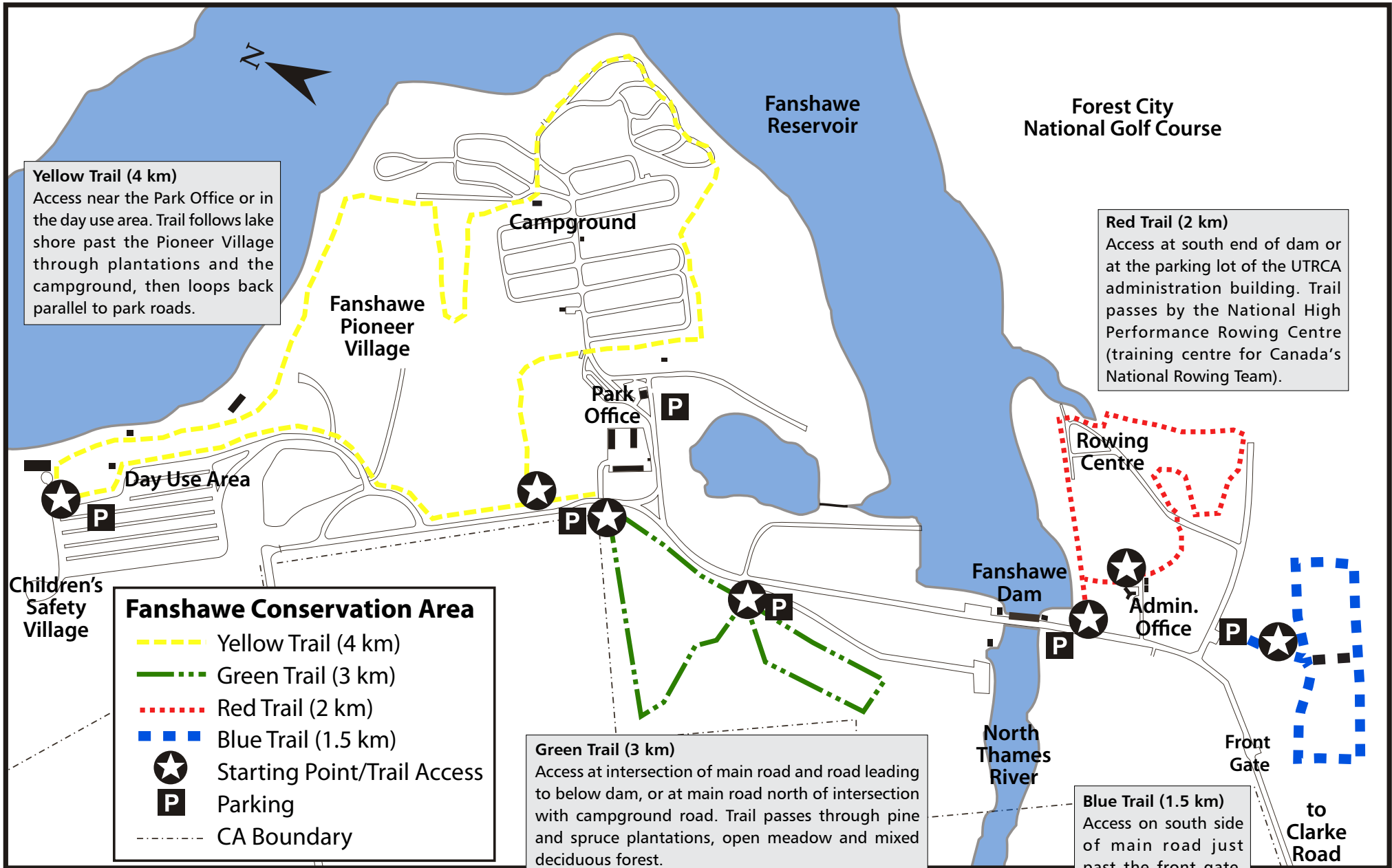


HIKING TRAILS in Fanshawe Conservation Area



Fanshawe Conservation Area
1424 Clarke Road, London, Ontario N5V 5B9
www.thamesriver.on.ca
(519) 451-2800

UPPER THAMES RIVER
CONSERVATION AUTHORITY



Please note:

The Fanshawe ski centre is no longer in operation. Ski rentals, snack bar and washroom facilities are not available.

See the Fanshawe Lake Trail brochure or go to www.thamesriver.on.ca for map and information on the Lake Trail (20 km, hike or bike).